

Official information about Coronavirus (COVID-19) from the NSW Government

For the latest COVID-19 advice visit our new beta website.

Find information on Coronavirus



Nexus Industrial Precinct

Located 10km north of Albury's CBD in the Riverina-Murray region, NEXUS is a 450ha site zoned to support large or heavy industrial development.

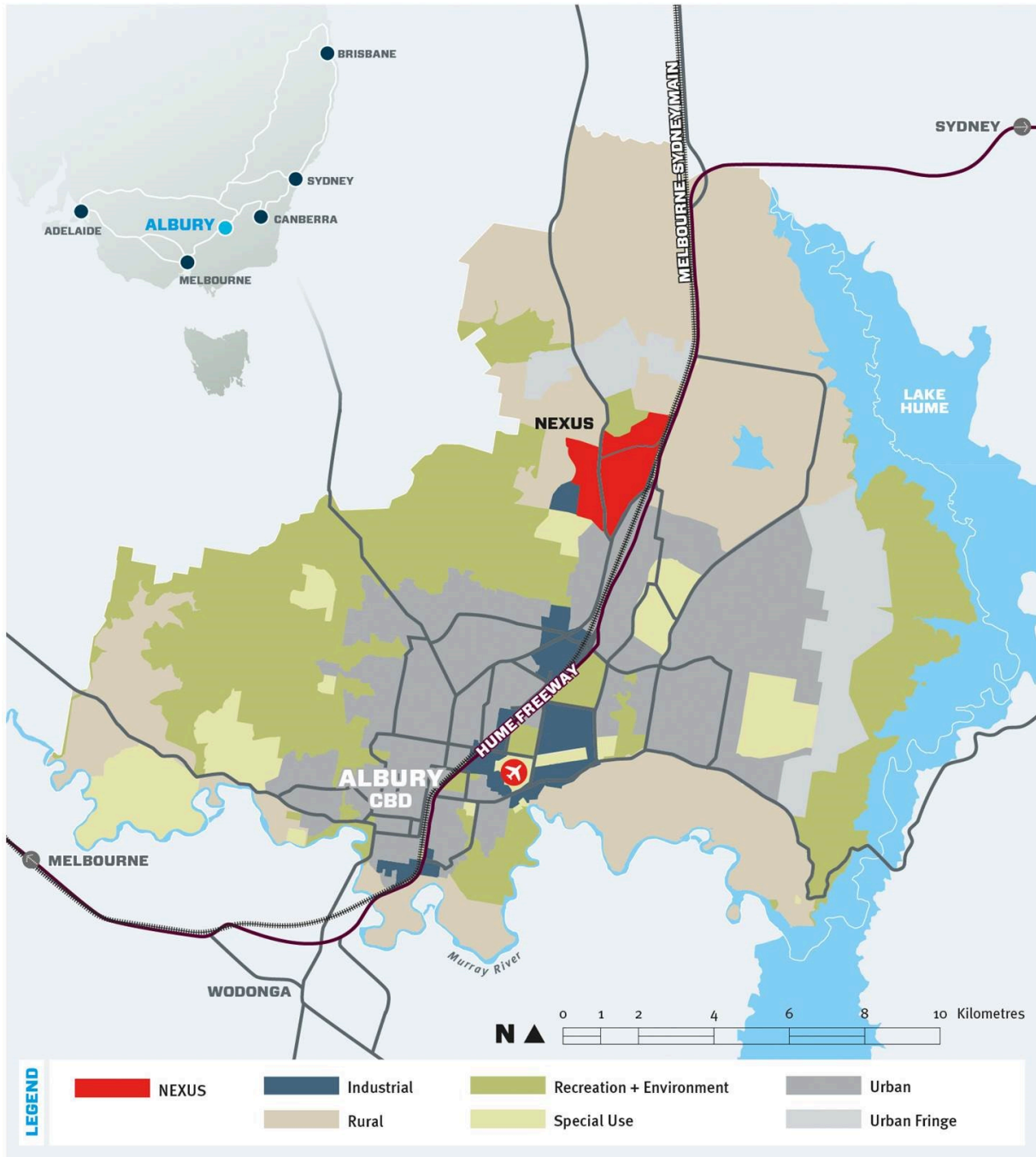
NEXUS is ideally placed for businesses looking for quality transport infrastructure.

Spanning the Hume Freeway and key rail corridors (Melbourne-Sydney and Melbourne-Brisbane) and incorporating an intermodal hub, businesses benefit from access to domestic and international markets through existing transport infrastructure. The Hume Freeway is conveniently accessible via the Davey Road and Thurgoona Drive interchanges.

Albury Airport is just 12km from the NEXUS precinct offering up to 180 flights per week to Melbourne and Sydney, serviced by three commercial carriers.

The Nexus Industrial Precinct presents the following competitive advantages:

- > State government support
- > Total investment (including State Government funding) is A\$32m to date
- > 75% of the Australian population can be serviced by next day delivery
- > Common-user intermodal rail hub operating on site - [Ettamogah Rail Hub](#)
- > Suitable for 24/7 operations
- > Existing industrial base with specialisations in manufacturing, transport, and logistics
- > Customisable land options to suit all development needs
- > Access to infrastructure including water, gas and NBN



For further information or to express your interest in the NEXUS Industrial Precinct, please contact Margaret O'Dwyer below.

Disclaimer:

Please note that this website is made available to showcase investment opportunities in Regional NSW. Information about the investment opportunities was provided by third parties and has not been independently verified by the Department. Do not rely on the information on this website to make an investment decision, but make your own enquiries and seek independent legal, financial and other professional advice. The Department and NSW Government does not recommend or endorse any of the investment opportunities mentioned on this website, nor any entity involved in such investment opportunities, and expressly disclaims any warranties in relation to them.

- > [Wagga Wagga Special Activation Precinct](#)
- > [Snowy Hydro Legacy Fund](#)



Margaret O'Dwyer

Deputy Director for Riverina-Murray

Office contacts

Suite 5, 620 Macauley Street
ALBURY NSW 2640

CALL

EMAIL